

Executive Summary



Annual Performance Report 2021-2022

Legislation requires HSCPs to publish an annual performance report setting out an assessment of performance in planning and carrying out the integration functions for which they are responsible.



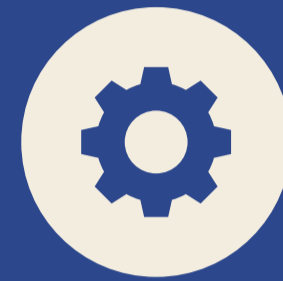
Vision

To enable people in Clackmannanshire and Stirling to live full and supportive lives within the community.



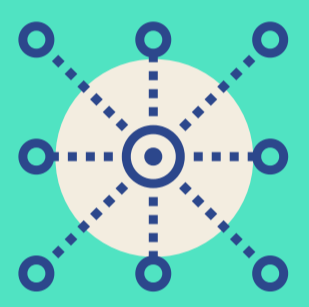
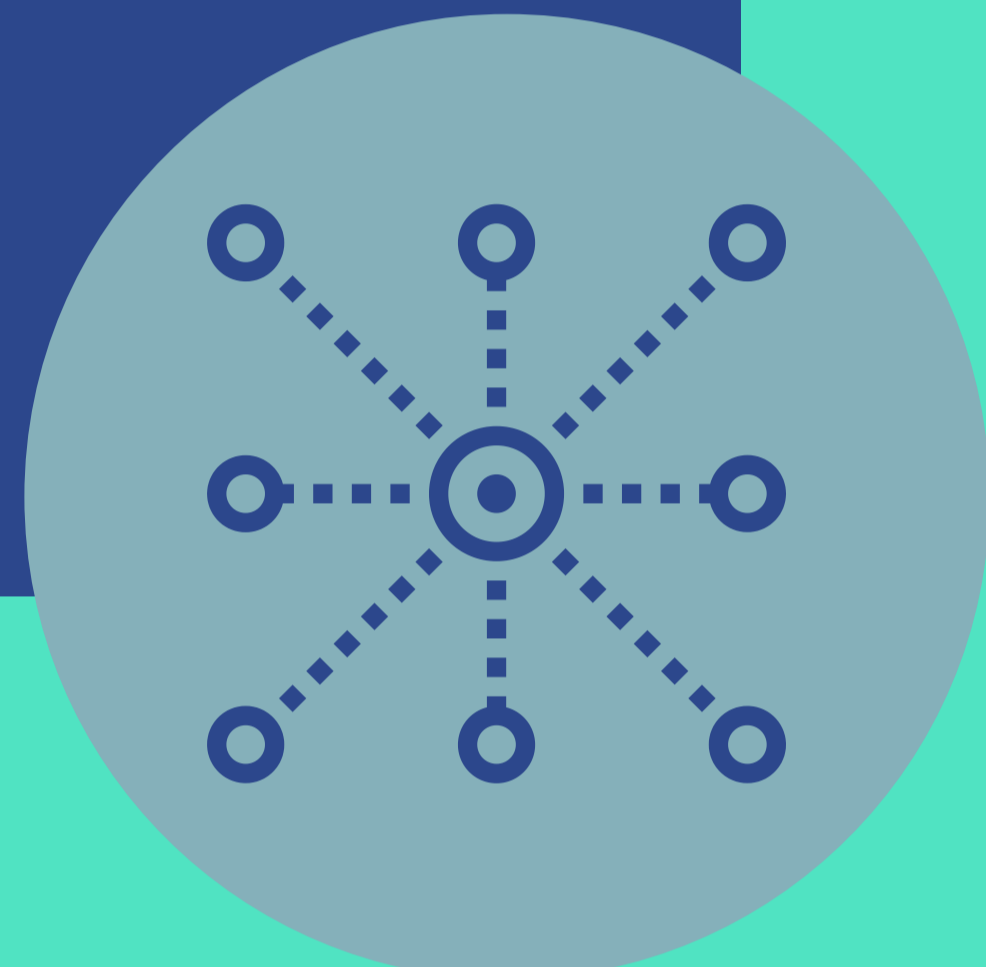
Priorities

- Care Closer To Home
- Primary Care Transformation
- Caring Connect Communities
- Mental Health
- Supporting People With Dementia
- Alcohol & Drugs



Enablers

- Technology Enabled Care
- Workforce Planning & Development
- Housing/Adaptations
- Infrastructure



Core Indicators - compared with last year

HSCP
72.5%
Scot
78.8%



Adults supported at home who agreed they are supported to live as independently as possible

Comparison ✓

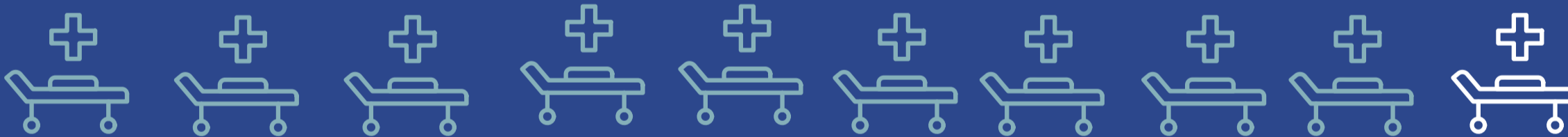
HSCP
79.2%
Scot
78.1%



Adults supported at home agree that their services and support had an impact on improving or maintaining their quality of life

Comparison ✓

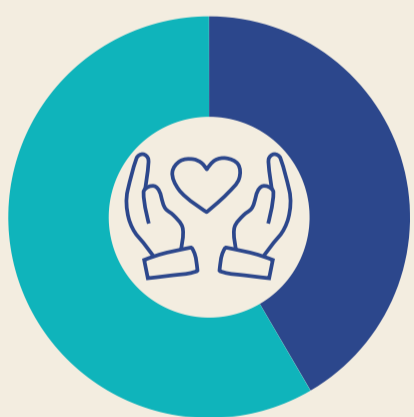
HSCP
97,710
Scot
111,293



Emergency bed day rate

Comparison ⬇

HSCP
71.2%
Scot
64.9%



Adults with intensive care needs receiving care at home

Comparison ✓

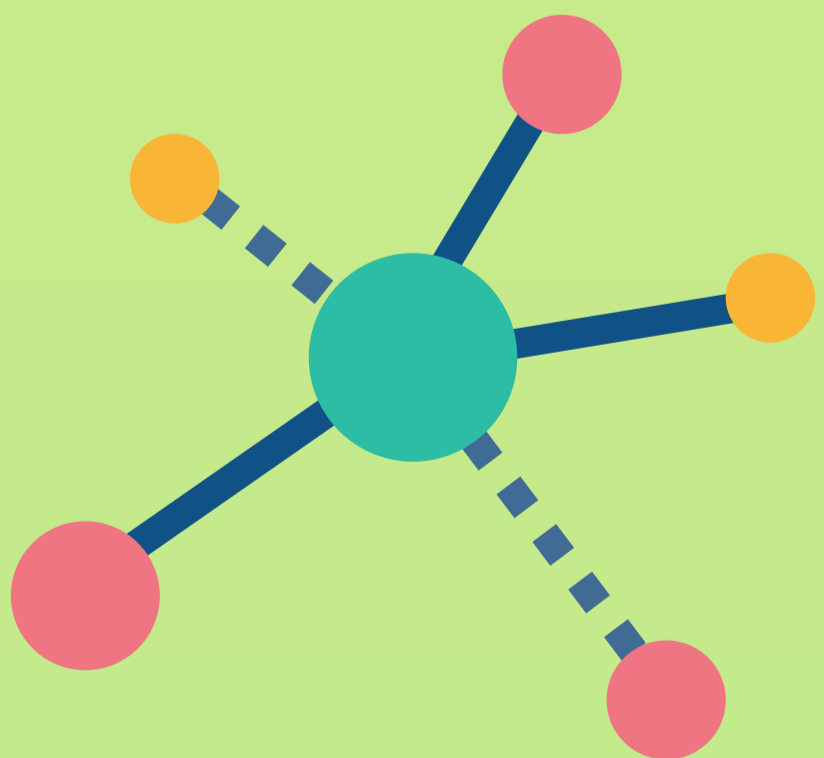
HSCP
761
Scot
761



Number of days people age 75+ spend in hospital when they are ready to be discharged (rate)

Comparison ⬇

Activity



Equipment



Health Care



Technology Enabled Care



Personal Care



Care Home



Expenditure

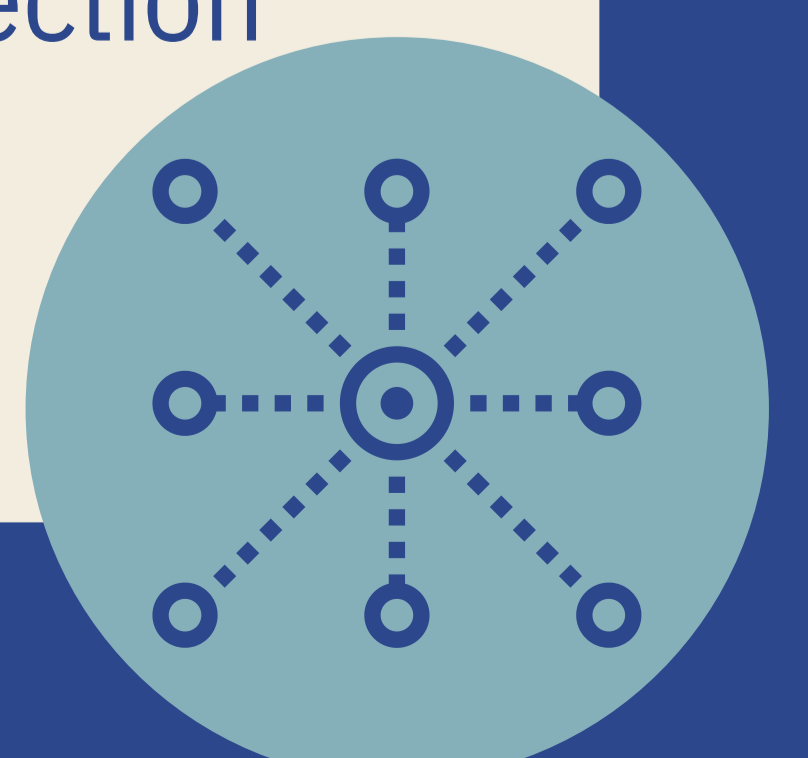
Annual Total

2020/21 £223,349
2021/22 £228,237



Independent Inspection

- Adult Support & Protection
- Care Home



clacksandstirlinghscp.org